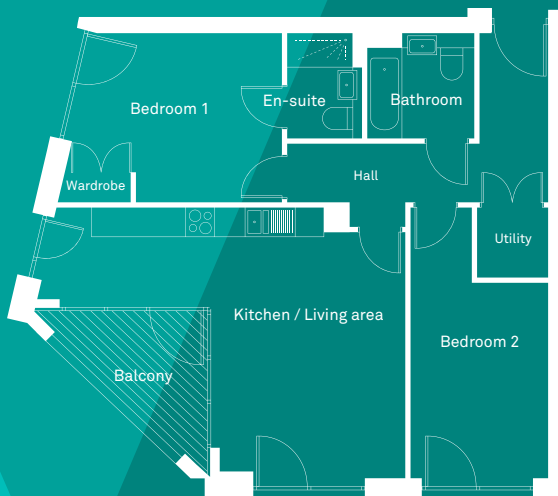


2 Bedroom Apartment

Total area: 78 sqm / 840 sqft

VIVE
living



APARTMENT TYPE #6

Floor plan for guide only and may differ

- 2 bedroom / 2 bathroom
- Underfloor heating throughout
- Contemporary handleless kitchen - integrated BOSCH appliances
- Balcony
- Karndean oak flooring in living rooms areas: soft carpet in bedrooms
- Roca bathrooms and Hansgrohe taps as standard
- Built-in storage

Every apartment has full access to: bike storage, roof terrace and Gym. Also provided is a 24 hour, weekly concierge... we like to look after you!

T: 020 8506 6040

E: hello@viveliving.co.uk